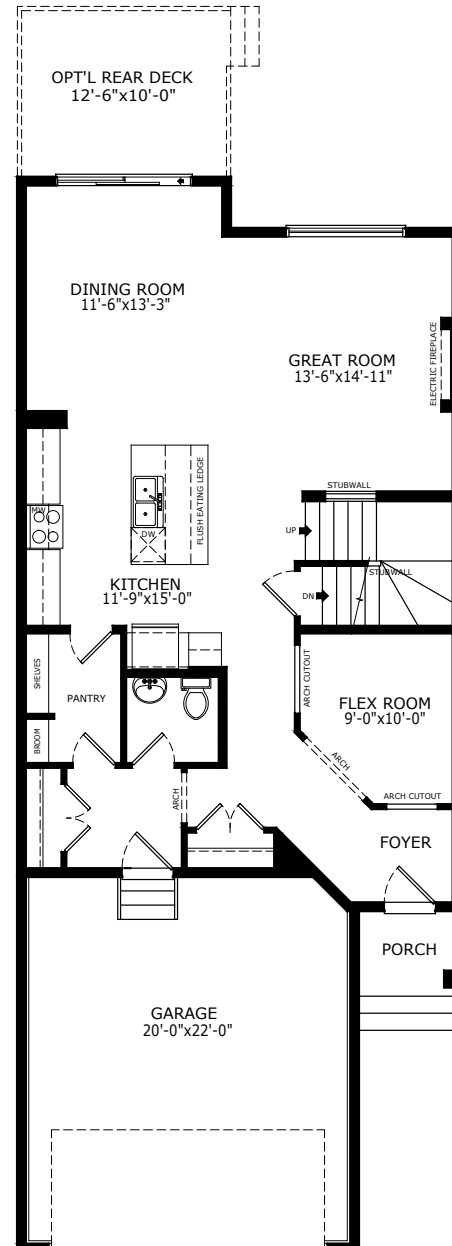
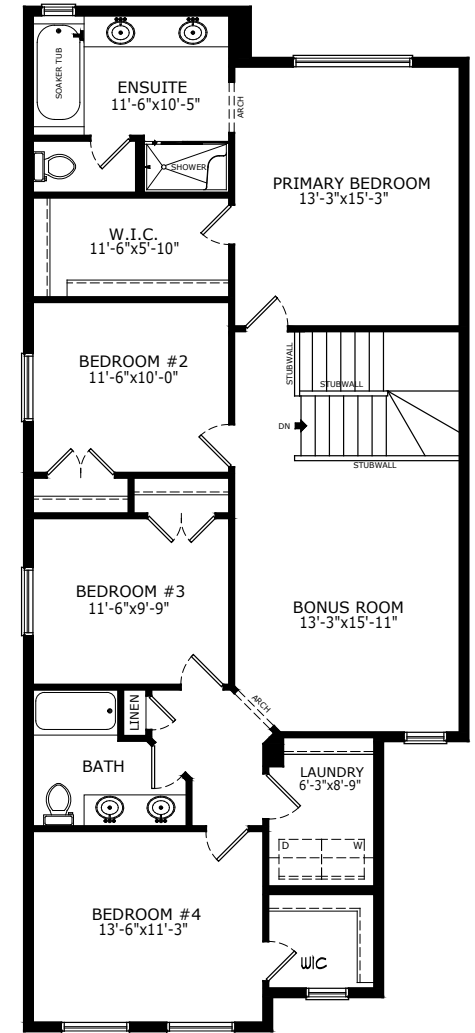


2396 SQ FT
4 BEDS
2.5 BATHS

PIERCE



MAIN: 1039 SQ FT



UPPER: 1357 SQ FT

Sterling HOMES

A QUALICO Company

ELEVATIONS



CRAFTSMAN



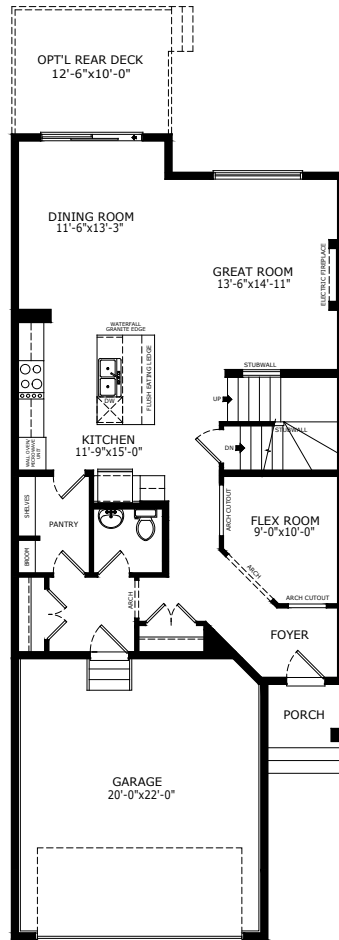
MODERN FARMHOUSE



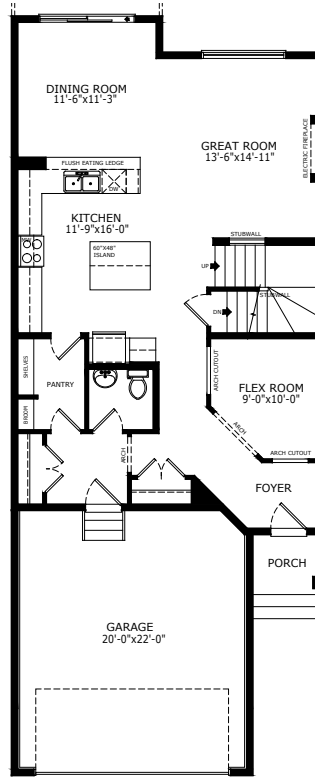
PRAIRIE

MAIN FLOOR OPTIONS

OPTIONAL EXECUTIVE KITCHEN

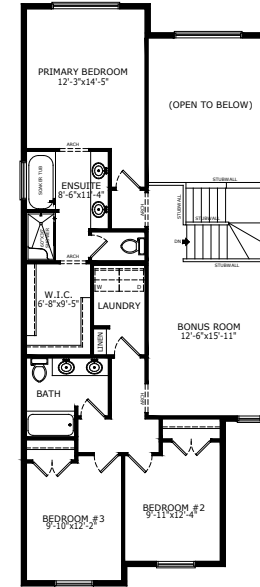


OPTIONAL KITCHEN

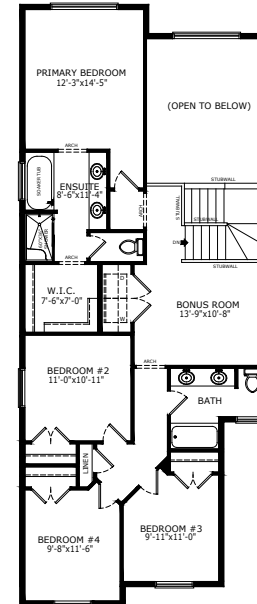


UPPER FLOOR OPTIONS

OPTIONAL OPEN TO BELOW W/4 BEDROOMS

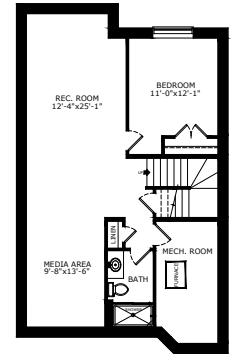


OPTIONAL OPEN TO BELOW W/3 BEDROOMS

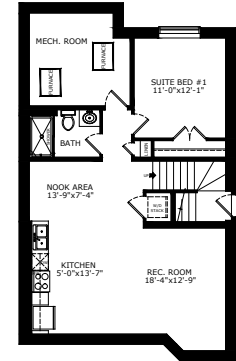


BASEMENT OPTIONS

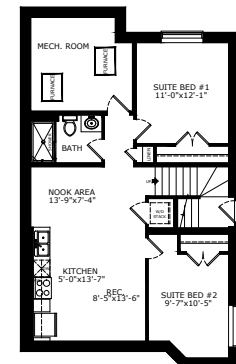
STANDARD 830 SQ FT



1 BEDROOM 'LEGAL SUITE' 848 SQ FT



2 BEDROOM 'LEGAL SUITE' 848 SQ FT



*Legal Suite availability varies by community and municipal regulations.



Scan here for floorplan options and more

Build Your Life

STERLINGCALGARY.COM